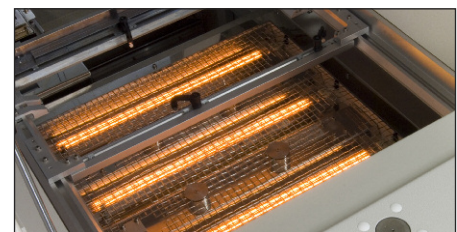
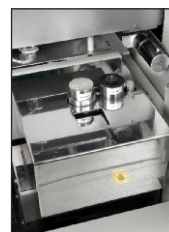
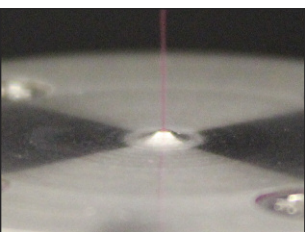


SYNCHRODEX COMBO



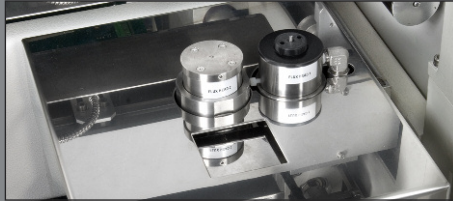
Pillarhouse
INTERNATIONAL

In-line or stand alone fluxer/preheater



SYNCHRODEX COMBO

In-line or stand alone fluxer/preheater

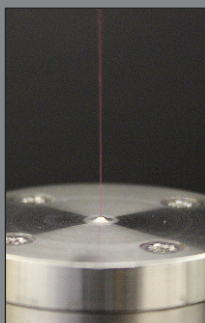


This compact modular in-line system utilises the same design concept as the new generation SynchroDEX soldering cell and offers the user significantly reduced process time when compared to using a single soldering unit with on-board fluxing and preheat functions. It also provides a reduced footprint and cost savings over the conventional three module, fluxing, preheat and selective soldering work cell.

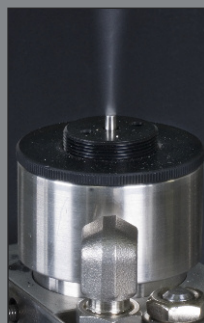
The fluxer/preheat combo operates in tandem with the selective soldering unit and can be configured with either Drop-Jet or ultrasonic flux heads and both top and bottom-side IR preheat functions. Twin pitch flux heads are available for further cycle time reductions.

The machine utilises an XY positioning system to position the flux head as required. A Drop-Jet flux head is supplied as standard with an ultrasonic head being ordered as an alternative or in addition to the standard head. Both systems provide precise control of the flux being deposited on the board.

Programming and control of the machine is via a PC using the Windows® based PillarCOMM software. Programs and machine configuration are protected by a customer selectable, multi-level password security system. The machine is freely programmable to cater to different board layouts. Each flux joint is separately programmable to its own set of required parameters. The programming system employs a component data library enabling quantities of similar joints to use the same fluxing data outline. Visually assisted self-teach alignment allows for fast and accurate board programming.



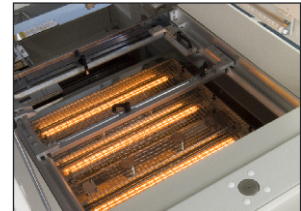
DROP-JET FLUX
HEAD



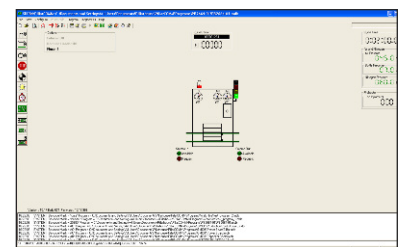
ULTRASONIC FLUX
HEAD



BOTTOM-SIDE SLIDE IN/OUT
IR PREHEAT



SLIDE IN/OUT BOTTOM-SIDE
IR PREHEAT



OPERATION

The SynchroDEX Combo is controlled by a PC, through PillarCOMM, a Windows® based 'Point & Click' interface with PCB image display, as illustrated above. Additionally, our PillarPAD offline package allows the operator to produce programs independently from the machine using Gerber data.

TWIN INDEPENDENT FLUX BOTTLE ASSEMBLY





STANDARD FEATURES

- In-line motor driven auto width adjust
- through feed synchronous movement conveyor
- Conveyor side clamping
- Integral PC and machine mounted TFT monitor
- Drop-Jet fluxer
- Internal fume extraction
- Colour programming camera
- PillarCOMM Windows® based 'Point & Click' interface
- Light stack
- Flux level sensor
- SMEMA compatible
- Multiple level password protection
- Day-to-day service kit

MONITORING OPTIONS

- Flux presence sensor - thermistor style
- Flux spray monitoring
- Flux flow monitoring
- Flux spray & flow monitoring



FLUX/PREHEAT COMBO WITH SYNCHRODEX SOLDERING MODULE

SYSTEM OPTIONS

- Ultrasonic fluxing
- Dual Drop-Jet / ultrasonic fluxing
- Top-side instant IR preheat
- Pyrometer closed loop temperature control
- Encoders on X, Y and Z axis

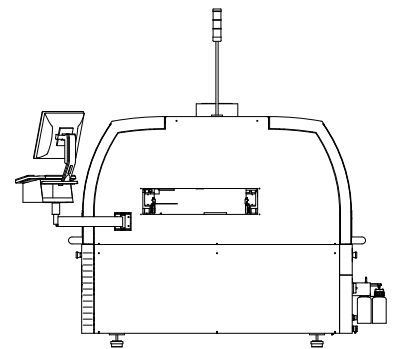
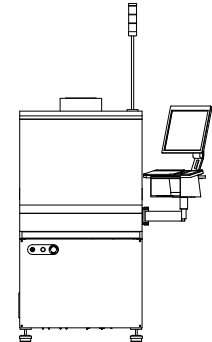
SYNCHRODEX COMBO



Pillarhouse
INTERNATIONAL

SPECIFICATIONS

Height:	1615mm / 63" - excluding light stack
Width:	813mm / 32"
Depth:	2024mm / 80"
Board size:	Max. - 457mm x 610mm / 18"x 24" Min. - 102mm x 102mm / 4"x 4"
Edge clearance:	Above / below 3mm
Height clearance:	Below 40mm - above 45mm 100mm - upon request
Extraction:	Fan: 276mm dia.
Rating:	1000m ³ /hr / 589 CFM
Flux:	Low maintenance Drop-Jet system. Low solids, no clean flux, pressurised and inerted system, optional water-soluble system available.
Flux tank capacity:	1 litre
Fluxer speed:	50 dots/second
Deposition size:	4.0-6.0mm / 0.16-0.24"
X, Y & Z axis resolution:	0.15mm
Repeatability:	+/- 0.05mm.
Nitrogen supply pressure:	5 bar / 72 psi
Nitrogen usage:	10-30 litres/min.
Air Supply Pressure:	5 bar / 72 psi
Air Usage:	10 litres/min. / 0.35CFM
Power Supplies:	Single-phase + PE.
Voltage:	230V
Frequency:	50/60 Hz.
Power:	13kVA max. - machine configuration dependent
Transport:	Conveyor
Programming:	PillarCOMM Windows® based 'Point & Click' interface



Pillarhouse International Ltd.
Rodney Way, Widford, Chelmsford, Essex CM1 3BY UK
Pillarhouse USA, Inc.
201 Lively Blvd, Elk Grove Village, IL 60007 USA
Pillarhouse (Suzhou) Soldering Systems Co., Ltd.
11 Yuanqi Road, Xiangcheng, Suzhou, China 215131

www.pillarhouse.co.uk
Tel: +44 (0) 1245 491333 Fax: +44 (0) 1245 491331
www.pillarhouseusa.com
Tel: +1 847 593 9080 Fax: +1 847 593 9084
www.pillarhouse.cn
Tel: +86 512 6586 0460 Fax: +86 512 6959 0567